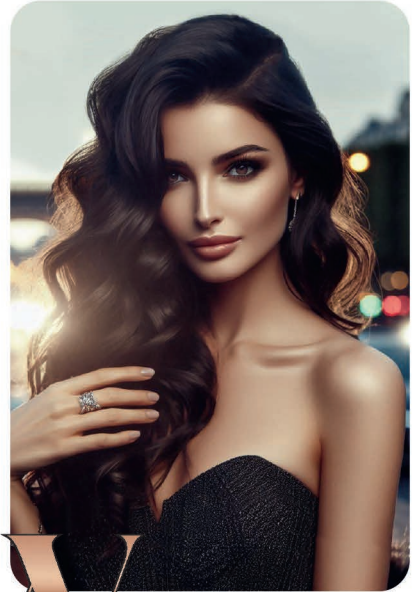




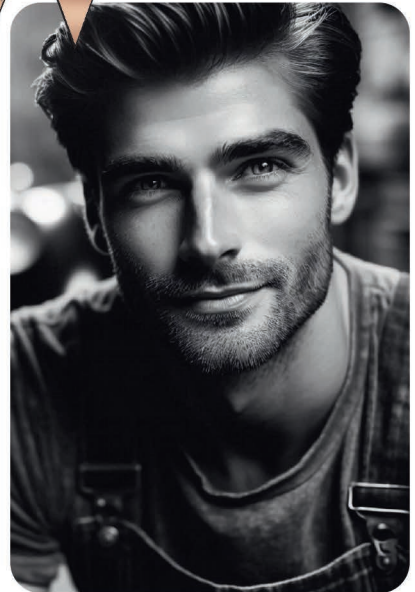
# GLOW

**Carin**  
Haircosmetics

*Elevate your Hairstyle !*



GLOW





# FIXING MOUSSE

300 ml

**Hold +++++**

**Shine +**

**Firm-hold mousse for blow-drying and long-lasting styles.**

## *How to Use:*

Shake well, dispense into your hands and apply on towel-dried hair.

## *Why You'll Love It:*

- Strong hold.
- Great for blow-drying and setting styles.
- Lightweight, high-concentrated formula.

**Perfect for adding volume and setting structured styles that last all day!**



# VOLUMIZING MOUSSE

200 ml

**Hold ++**

**Shine +++**

**Achieves long-lasting volume, specially designed for blow-drying and setting with an added anti-static effect. Enriched with panthenol.**

## *How to Use:*

Apply on towel-dried hair from roots to ends. Blow dry for enhanced body and fullness, or let air-dry to define natural curls and waves.

## *Why You'll Love It:*

- Provides hold for structured styles.
- Boosts volume with anti-static effect.
- Perfect for both smooth blow-drying and defining natural textures.

**Your go-to for voluminous, frizz-free styles!**



# HIGH ROOTS

200 ml

**Hold +++++**

**Shine +**

**Mousse with a specific applicator for root volume.**

*How to Use:*

Shake well and apply directly on the roots for targeted volume. Suitable for wet and towel-dried hair.

*Why You'll Love It:*

- Lifts roots for added volum.
- Works on both wet and towel-dried hair.
- Perfect for creating full-bodied styles.

**Instantly boost volume at the roots for full, bouncy styles without weighing down your hair!**



# HEAT SHIELD

150 ml

**Hold +  
Shine +++**

**A protective cream designed for heat styling, offering natural hold and moisture with added frizz control. Enriched with panthenol and hydrolyzed wheat protein.**

## *How to Use:*

Apply a small amount on towel-dried hair before blow-drying or use on dry hair before styling with curl and flat irons.

## *Why You'll Love It:*

- Protects hair from heat damage.
- Adds moisture, shine and control.
- Perfect for smooth, frizz-free blow-drying or styling with curl and flat irons.

**Maximize your blow-drying and styling routine with essential heat protection!**



# CREATIVE CLAY

100 ml

**Hold ++**

**Matt +**

**A flexible paste with Kaolin clay that delivers natural support and a matt finish without weighing down the hair.**

## *How to Use:*

Warm a small amount in your hands, then work into dry hair with your fingertips to sculpt your desired style.

## *Why You'll Love It:*

- Matt, texturized finish.
- Allows easy restyling throughout the day.
- Lightweight and flexible hold.

**Create defined, matt styles with flexibility to restyle as often as you like, without any heavy buildup!**



# TEXTURE PASTE

100 ml

**Hold +++**

**Matt ++**

**The ultimate matt-finish paste that adds body and volume for a textured look.**

## *How to Use:*

Warm a small amount in your hands, then work through dry hair in circular motions to create an effortless 'out-of-bed' style.

## *Why You'll Love It:*

- Adds volume with a matt effect.
- Ideal for casual, textured looks.

**Achieve effortless texture with a medium hold throughout the day!**







*Elevate your*





*Hairstyle !*

# FINISHING CREAM

150 ml

**Hold +  
Shine +++++**

**Infused with nourishing beeswax to add shine, Finishing Cream offers natural hold and frizz control, perfect for achieving smooth styles.**

## *How to Use:*

Warm a small amount in your hands, then work into dry hair with your fingertips for a natural, effortless look.

## *Why You'll Love It:*

- Anti-frizz effect.
- Keeps hair flexible while maintaining volume.
- Leaves hair with a beautiful, healthy shine.
- Adds definition and movement to short haircuts.

**Perfect for professional results and daily styling!**



# EXTREME GEL

200 ml

**Hold +++++**

**Shine ++**

**A high-performance finishing gel with extreme hold and fast drying time.**

## *How to Use:*

Rub a small amount in your hands and apply on dry hair for maximum control or on towel-dried hair for a wet look effect.

## *Why You'll Love It:*

- Ultra-strong, long-lasting hold.
- Quick drying.
- Great for sharp, defined styles.

**Lock in bold, structured styles instantly with extreme hold!**





# TEXTURIZING SPRAY

150 ml

**Hold +  
Matt +**

**A texturizing spray enriched with plant proteins, that provides instant volume and texture, leaving hair easier to style.**

*How to Use:*

Shake well and apply on dry hair from a distance of 20 cm.

*Why You'll Love It:*

- Plant-based magnesium stearate and rice starch instantly add extra volume to the hair.
- Wheat, corn, and soy proteins nourish and add shine.
- Leaves hair with added grip making it easier to style.

**Boost your hair's natural texture with lightweight volume and added body for effortless styling!**



## FIXING SPRAY

300 ml

Hold +++  
Shine ++



## FIXING SPRAY (Non Aerosol)

250 ml

Hold ++++  
Shine ++



**A maximum control  
finishing spray for lasting  
hold. Brushes out easily.**

### *How to Use:*

Spray onto dry or towel-dried  
hair from a distance of 15-20  
cm.

### *Why You'll Love It:*

- Strong, long-lasting hold  
with easy brush-out.
- Perfect for finishing any  
hairstyle.

**Achieve strong hold and  
perfect definition for  
ultimate control!**

# GLOSS SPRAY

150 ml

**Shine +++++**

**A non-aerosol spray for instant, superior shine with UV protection.**

## *How to Use:*

Apply as a finishing touch on any hairstyle for a healthy, glossy look. Spray onto dry hair from a distance of 15-20 cm.

## *Why You'll Love It:*

- Lightweight shine without weighing down your hair.
- UV protection.

**Finish your style with a non-greasy shine that lasts all day, protecting your hair from UV damage!**







#### **FIXING MOUSSE**

Firm-hold mousse for blow-drying and long-lasting styles.



#### **CREATIVE CLAY**

A flexible paste with Kaolin clay that delivers natural support and a matt finish without weighing down the hair.



#### **TEXTURE PASTE**

The ultimate matt-finish paste that adds body and volume for a textured look.



#### **FIXING SPRAY**

A maximum control finishing spray for lasting hold. Brushes out easily.



#### **VOLUMIZING MOUSSE**

Achieves long-lasting volume, specially designed for blow-drying and setting with an added anti-static effect. Enriched with panthenol.



#### **FINISHING CREAM**

Infused with nourishing beeswax to add shine, Finishing Cream offers natural hold and frizz control, perfect for achieving smooth styles.



#### **FIXING SPRAY Non Aerosol**

A maximum control finishing spray for lasting hold. Brushes out easily.



#### **HIGH ROOTS**

Mousse with a specific applicator for root volume.



#### **EXTREME GEL**

A high-performance finishing gel with extreme hold and fast drying time.



#### **HEAT SHIELD**

A protective cream designed for heat styling, offering natural hold and moisture with added frizz control.



#### **TEXTURIZING SPRAY**

A texturizing spray enriched with plant proteins, that provides instant volume and texture, leaving hair easier to style.



#### **GLOSS SPRAY**

A non-aerosol spray for instant, superior shine with UV protection.



CARIN HAIRCOSMETICS nv - sa  
Kalkaertweg 6, B-8430 Middelkerke, Belgium

[www.carin.be](http://www.carin.be)